

CERTIFICATE OF LOCATION OF GOVERNMENT CORNER

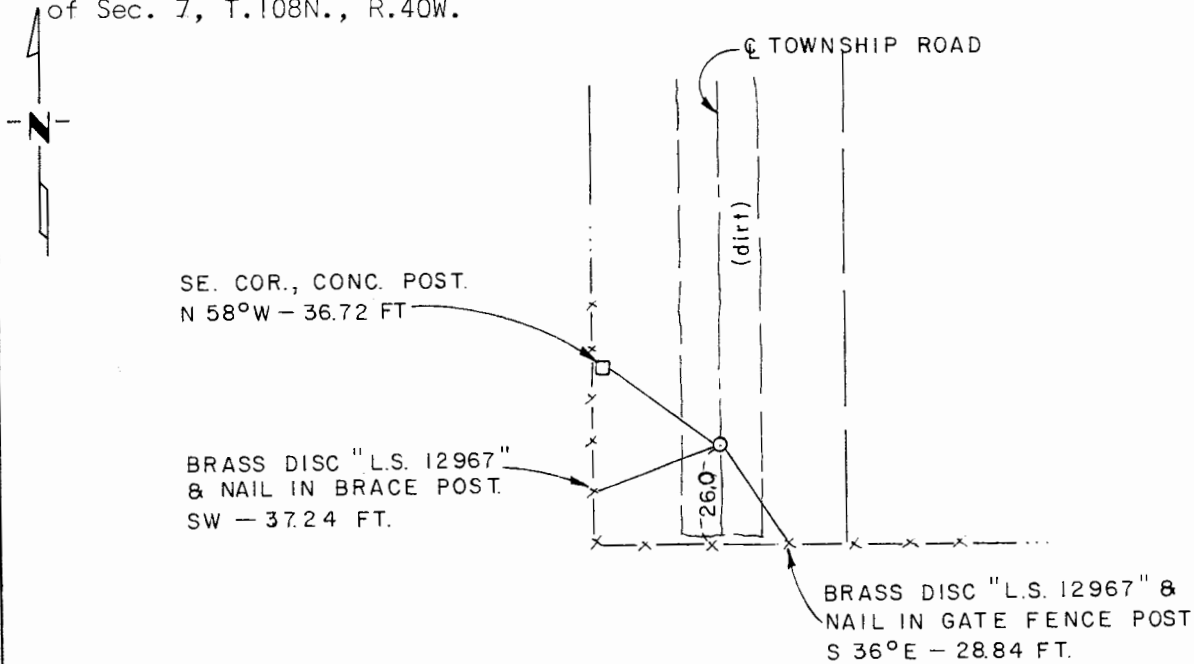
West Quarter _____ Corner of Section 6, Township 108 N., Range 40 W., 5th P.M.

STATE OF MINNESOTA, County of Murray

At the corner location shown on the sketch:

- On _____ found a _____
DATE
- left monument as found, lowered monument, removed monument (explain)
- On Oct. 7, 1980 placed a 1/2" iron reinforcing bar with "L.S. 12967" cap per lost
DATE procedure on line between the reset northwest corner of said section and the*

*found west quarter corner SKETCH OF REFERENCE TIES
of Sec. 7, T.108N., R.40W.



I hereby certify that this document and the data contained herein was prepared by me or under my direct supervision.

[Signature] _____
SIGNATURE DATE

Registration No. 12967

- Land Surveyor, Professional Engineer
- County Surveyor, County Engineer

OFFICE OF THE COUNTY RECORDER

County of Murray

I hereby certify that this document was filed in the Co. Recorders office at 10 A.M. on the 18th day of February A.D., 19 82

County Recorder Willard W. Ohme

By _____, Deputy

DOCUMENT NO. _____